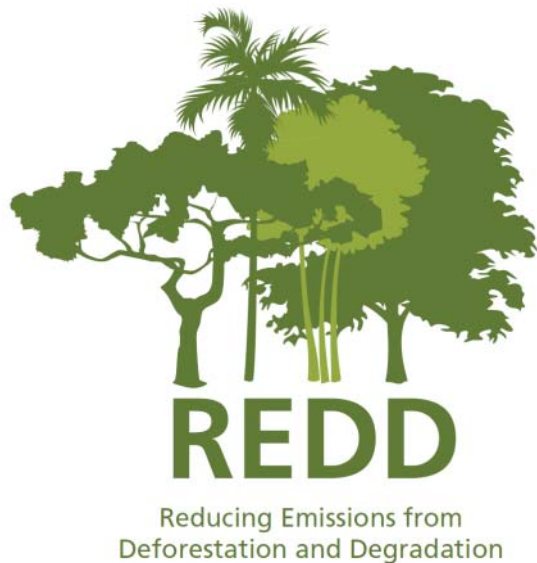
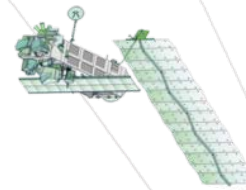


# COMIFAC Side Event COP 15, Copenhagen



## Preliminary Results and Perspectives of the REDD Pilot Project in Cameroon

Dr. Joseph Amougou, Cameroon Climate Focal Point, MINEP

Dr. Thomas Häusler, GAF AG

Consortium led by:



Project supported by:



Partner for the Future.  
Worldwide.



Project Part of



# Introduction

---



- **Cameroon has been actively involved in the UNFCCC REDD deliberations since 2005**
- **SBSTA and COP submissions under the umbrella of COMIFAC**
- **Forest area is approximately 19.6 million hectares (representing 11% of the Congo Basin forest and covering 41% of the national territory)**
- **Forest sector contributes approximately 12% of GNP Timber accounts for 25% of export**

# Organisational Developments to Support REDD

---



- **Elaboration of the World Bank R-PIN**
- **Elaboration of the World Bank R-PLAN**
- **National REDD Steering Committee set up with a Ministerial decree from December 2008; MINEP chairs the Committee, MINFOF is Vice Chair**
- **Implementation of the REDD Cameroon Pilot Project, 2007-2009 with ESA, KfW and GTZ-COMIFAC support**

# Important Issues for Cameroon

---



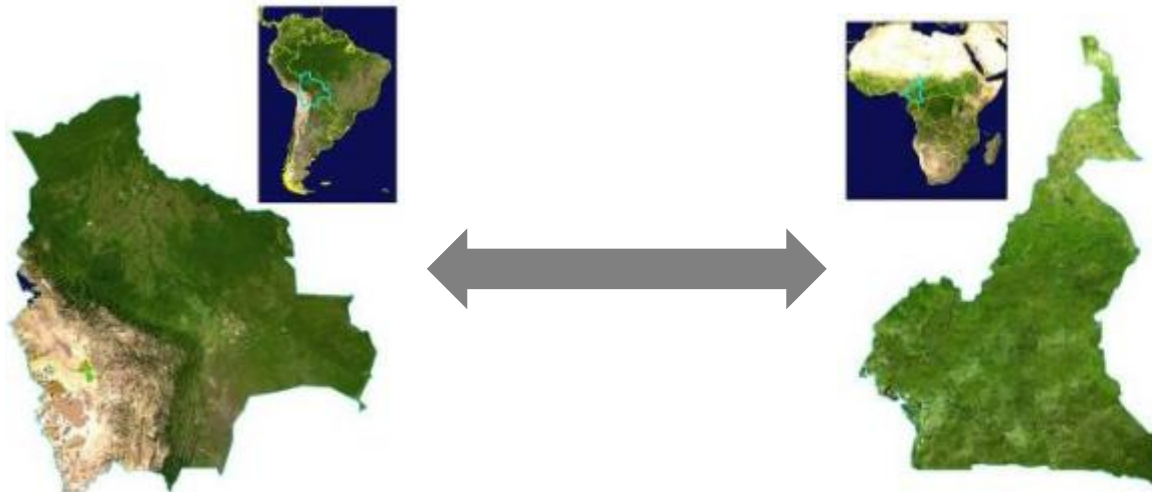
Key propositions for Cameroon are:

- **Consider degradation on the same level as deforestation in calculating emissions (adopted in COP13 Bali)**
- **Create a fund to support and reward present efforts by Congo Basin countries to maintain carbon stock**
- **Include a development adjustment factor in the establishment of a reference baseline**
- **A combination of national and sub-national approaches due to the weak institutional capacity of developing countries which lack financial resources or necessary technology to implement a national approach;**
- **A combination of market-based and fund-based approaches to ensure durability of actions and to forecast future financial fluxes.**

# Objectives of the REDD Pilot Project



- Develop tools to account for national DD emissions
- Identify opportunities for national incentive schemes and strengthen dialogue between stakeholders
- Facilitate the regional and international exchange on learning experiences



# Tasks of the REDD Pilot

---



## **Task 1:**

*Stakeholder Analysis and Implementation Framework*

## **Task 2:**

*Reference Scenarios/Estimating  
Deforestation/Degradation*

## **Task 3:**

*Emission Accounting and Scenario Analysis*

## **Task 4:**

*Capacity Building and Technology Transfer for REDD*

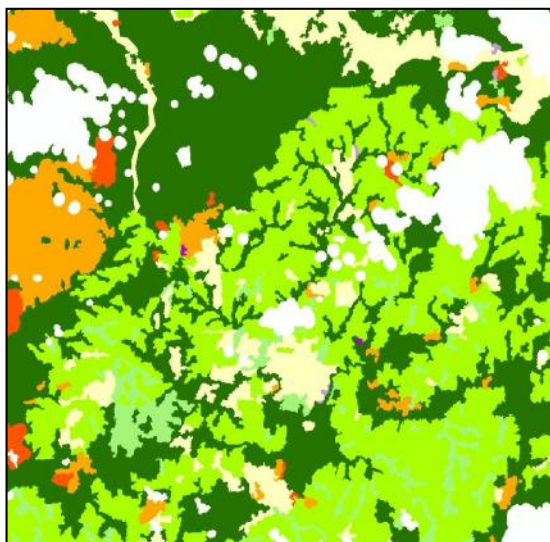
# Methods for Deforestation Mapping



Multi-temporal EO Data from various sources

Landsat-TM, DMC,...

## Forest and Landuse Change



### Legend

- Not useable (clouds, missing data)
- 1990 non forest, 2000 non forest, 2005 forest
- all non forest
- 1990 non forest, 2000 forest, 2005 non forest
- 1990 non forest, 2000 forest, 2005 forest
- 1990 forest, 2000 non forest, 2005 non forest
- 1990 forest, 2000 non forest, 2005 forest
- 1990 forest, 2000 forest, 2005 non forest
- all forest
- cameroon border
- region borders

Mapping of  
Landuse and  
Forest Changes



Input for biomass  
counting and emmissions  
projection

# Biomass Accounting Methods

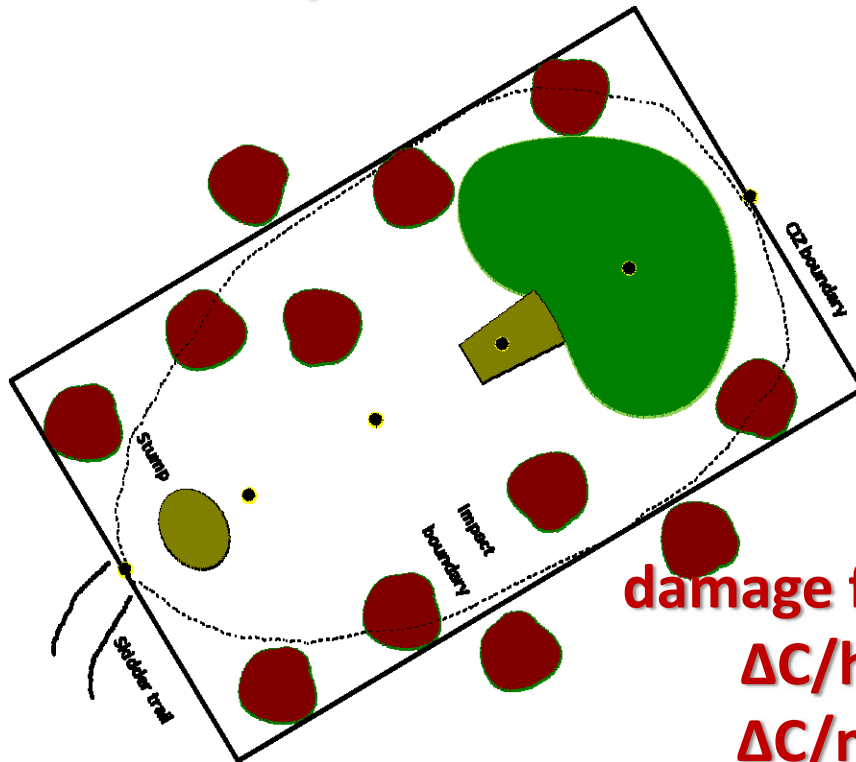


## Permanent Plot Design

Developed by Winrock International, modified and implemented by FAN

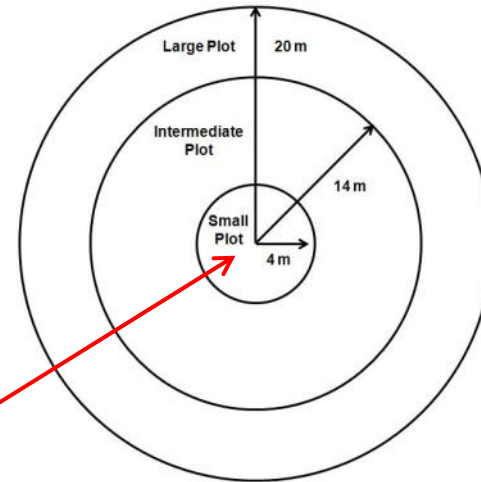


### Carbon Impact Zone Plot



50 m

damage factor:  
 $\Delta C/ha$   
 $\Delta C/m^3$



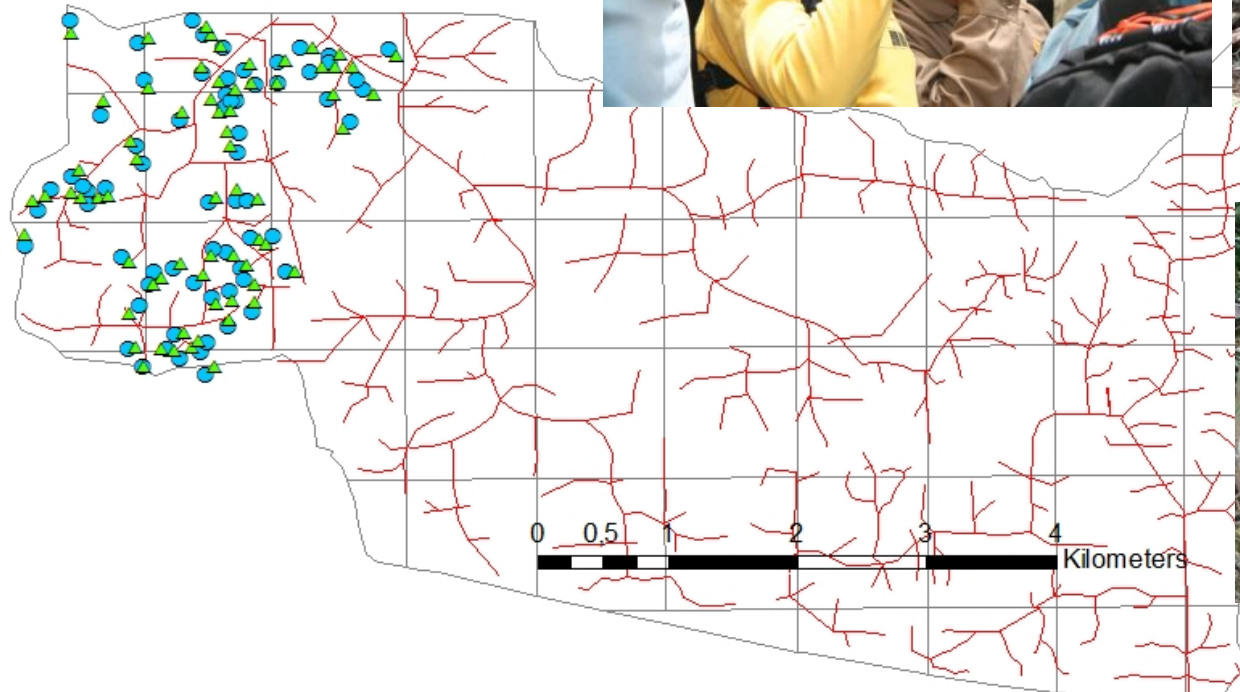
intact carbon stock (5 pools)

=> Carbon stock in HWPs

### Paired Plot



- ▲ CIZ Plots
- Paired Plots
- logging roads
- Timber Harvesting Area 2009



**GAFAG**

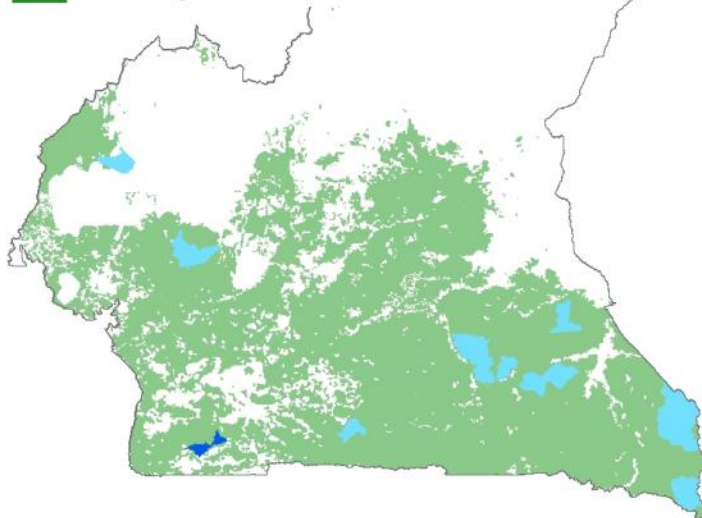
# Preliminary Results



Carbon stock: Closed evergreen lowland forest [tC/ha]							
Wood	lying dead wood	Standing dead wood	Below Ground	Other vegetation	Litter	Soil	Total
211,42	17,97	12,51	42,28	2,64	2,55	41,04	<b>326,12</b>

Forest Management Unit (FMU)  
FSC certification

- FSC
- FSC pre-audit
- Closed evergreen lowland forest



Damage factor [tC / m <sup>3</sup> extracted]	
mean	2,07
min	0,22
max	8,93
StDev	1,34
No Plots	67,00
SE	0,16
95% CI	0,32



# Capacity Building

---



- **Specific capacity building activities ensure that project results, methodologies and lessons learned are transferred to local counterparts**
- **South-south co-operation facilitates this process**

# Technology Transfer and Capacity Building



- **Technology Transfer between:**
  - Bolivia and Cameroon, South-South Co-operation: Emission accounting and Reference emission scenarios
  - European Partners and Cameroon: EO for deforestation/degradation mapping
- **Capacity Building via Workshops and on-the-job-training**
  - Biomass accounting workshop
  - Biomass inventory field training
  - Remote Sensing workshop
  - GIS training workshop
  - Field surveys

# GIS & RS Training – Yaoundé, Nov09



# Roll-out



Cameroon



gtz

Gabon

Republic of Congo

# Cameroon Stakeholders



**MINEP- Ministry of Environment and Nature Protection, UNFCCC National Focal Point, Chair of National REDD Steering Committee**



**MINFOF - Ministry of Forestry and Wildlife, Co-Chair of National REDD Steering Committee**



**COMIFAC - Commission of Central African Forests**

# Partners and Financiers



KfW provides funding for REDD Pilot



GTZ-COMIFAC programme supports REDD pilot in Cameroon for the Region



GAF AG is a globally active Consultancy Company in Germany in the field of development assistance, Earth Observation technology, spatial information systems. GAF AG provides forestry expertise, standards, technical design, dialogue with stakeholders, quality assurance, uncertainty assessment.



European Space Agency supported intitialisation of REDD Pilots



Joanneum Research – Austria. Supports the project with newest technology in satellite image processing



Fan Bolivia has experience from Noel Kempff Mercator Park Project and supports biomass measurements, landuse change scenarios and deforestation emissions projection